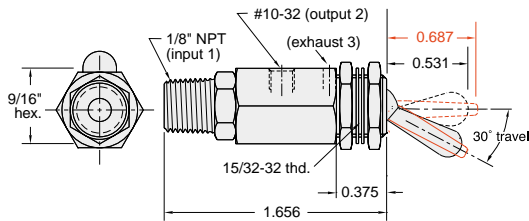
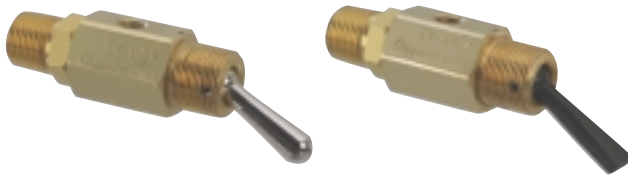




3-WAY TOGGLE VALVES

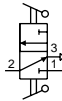
2 Position N.C. Spool w/Momentary Actuation



Input Pressure: 150 psig max.

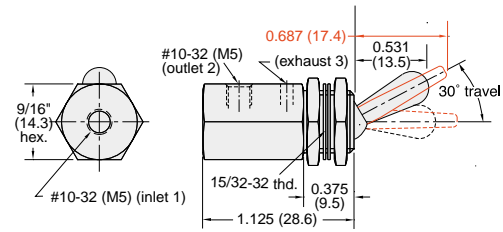
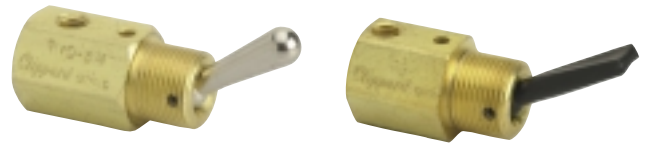
Air Flow: 4.0 SCFM @ 50 psig; 6.8 SCFM @ 100 psig

Force For Full Stem Travel: 12 oz. nominal



Part No.	Description
TV-3MP	.2 Position Spool Valve, NP Brass Toggle
TV-3MFP	.2 Position Spool Valve, Plastic Toggle

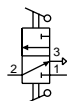
2 Position N.O. Poppet w/Momentary Actuation



Input Pressure: 300 psig/21 bar max.

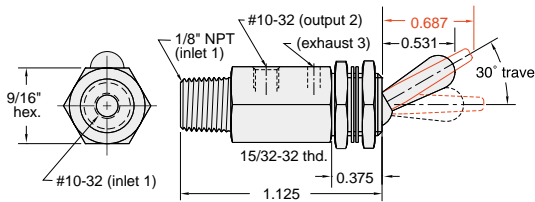
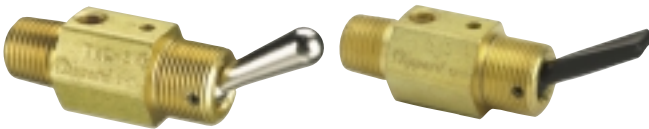
Air Flow: 4.0 SCFM @ 50 psig; 6.8 SCFM @ 100 psig;
170 lpm @ 6 bar

Force For Full Stem Travel: 12 oz. nominal



Part No.	Description
TVO-3M	.2 Position Spool Valve, NP Brass Toggle, #10-32
TVO-3M-M5	.2 Position Spool Valve, NP Brass Toggle, M5
TVO-3MF	.2 Position Spool Valve, Plastic Toggle, #10-32
TVO-3MF-M5	.2 Position Spool Valve, Plastic Toggle, M5

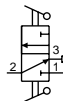
2 Position N.O. Poppet w/Momentary Actuation



Input Pressure: 300 psig max.

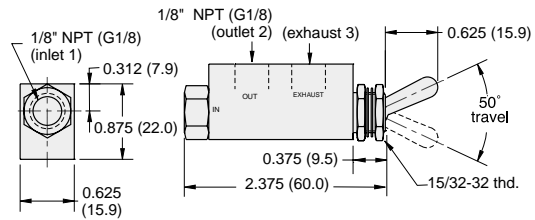
Air Flow: 4.0 SCFM @ 50 psig; 6.8 SCFM @ 100 psig

Force For Full Stem Travel: 12 oz. nominal



Order Information	Description
TVO-3MP	.2 Position Spool Valve, NP Brass Toggle
TVO-3MFP	.2 Position Spool Valve, Plastic Toggle

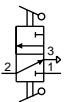
2 Position Poppet Valves



Input Pressure: 100 psig/6.9 bar max.

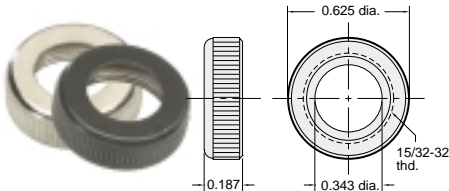
Air Flow: 14 SCFM @ 50 psig; 25 SCFM @ 100 psig;
600 l/min @ 6 bar

Force For Full Stem Travel: 16 oz. nominal



Part No.	Description
MJTV-3	.2 Position Poppet Valve, 1/8" NPT
MJTV-3-MG	.2 Position Poppet Valve, G1/8

15/32 Panel Mounting Nut



Brass with black or bright nickel finish

Part No.	Description
11406-1Black
11406-2Bright